



ELLE OPEN HOUSE

**Boston Renaissance Charter
Public School**

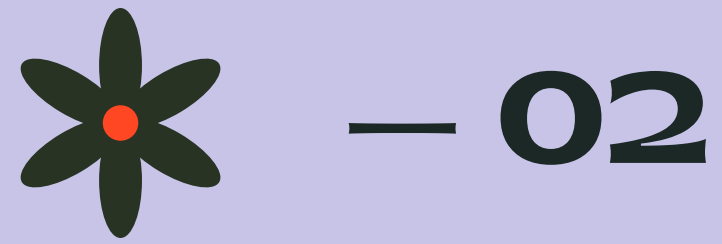
December 16. 2021

ENGLISH LANGUAGE EDUCATION

ENGLISH LANGUAGE EDUCATION

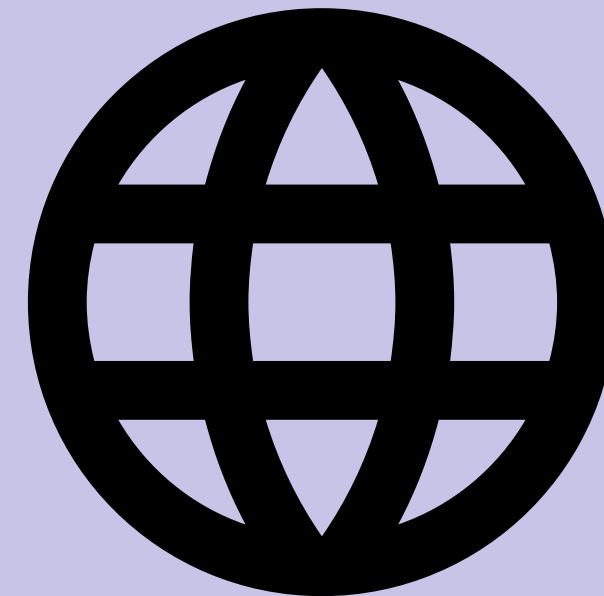
ENGLISH LANGUAGE EDUCATION

ENGLISH LANGUAGE EDUCATION



AGENDA

- Introductions
 - ELE Program Information
 - ACCESS testing
 - Resources to use at home
 - ELPAC
 - Questions
-



WELCOME!

WE ARE SO EXCITED AND GRATEFUL TO BE WORKING WITH YOUR CHILDREN!



Ms. Galvin
ELE Program
Coodinator



Ms. Coughlin
ELE Teacher -
K2, 1st & 2nd



Ms. Daly -
ELE Teacher-
K2



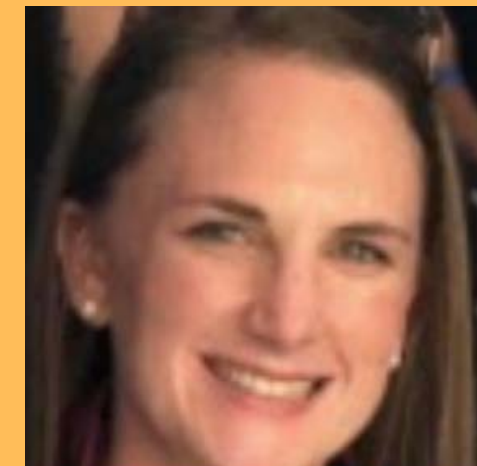
Ms. Lavenberg
ELE Teacher -
1st, 3rd, 4th



Ms. Copeland
- USS Director



Ms. Watkins
ELE Teacher-
2nd,4th, 5th & 6th



Ms. Petterson
ELE Teacher- 2,
3rd & 4th

ELE Program Information

What is ELE?

- English Language Education
- Students in the ELE program receive direct instruction from an ESL teacher to support their English language development (speaking, listening, reading, writing)
- This happens in small groups (6 students or less)

Who qualifies for ELE services?

- Any students whose home language is not English OR lives in an environment where a language other than English is used.

Identifying a student as an ELL



1. You answered questions about the language you use at home.



2. A test measured your child's academic English skills in listening, reading, speaking, and writing.

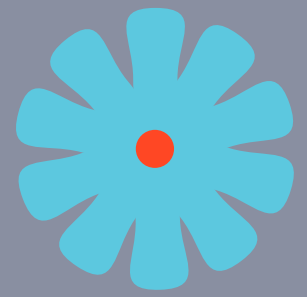


3. Your child can have instruction in English, in addition to other classes.



ENGLISH LANGUAGE DEVELOPMENT - WIDA

- WIDA stands for World-Class Instructional Design and Assessment.
- It's a group that creates and supports English Language Learners with standards and “Can-Do” goals for English language development.
- There are six levels of proficiency: **1-Entering, 2-Beginning, 3-Developing, 4-Expanding, 5-Bridging, 6-Reaching**



ACCESS Test - 2021

— 06



Why is my child taking the ACCESS test?

- Testing helps teachers understand whether students have the language skills they need to be successful across academic content areas.
- Your child's teachers use ACCESS for ELLs test scores as they decide how best to teach your child.
- Test scores also help teachers track your child's progress in learning academic English and help schools decide what English language support services to provide. You can use test information to advocate for your child at school.



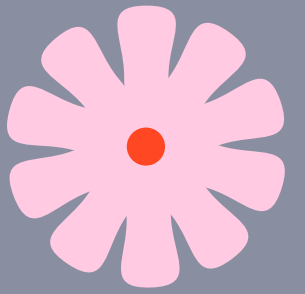
ACCESS Test - 2022



- Students in grades 1-3 will take the Speaking, Listening, and Reading test on the computer. They will take the writing test on paper.
- Students in grades 4-6 will take all four domains of the test on the computer.
- Students in K2 take a test that uses stories and activities to keep young learners engaged.



ACCESS Test - 2022



Your child does not need to study for ACCESS for ELLs. The test is an opportunity for students to demonstrate all the ways that they understand and can communicate in English. Prepare for test day by making sure your child gets plenty of sleep and eats breakfast!



ELPAC

English Learner Parent Advisory Council

The Boston Renaissance Charter Public Charter School is pleased to announce the establishment of the English Learner Parent Advisory Council (ELPAC) to promote and support the success of our English Learner (EL) Scholars.

The ELPAC committee is seeking parent volunteers to support and enhance the instruction of our ELs. ELPAC membership is strictly voluntary and is open to all parents of students identified or have been previously identified as an English Learner (EL), and represent/speak the native languages most commonly spoken by the students in our school.



ELPAC

English Learner Parent Advisory Counsel



ELPAC Duties Can Include:

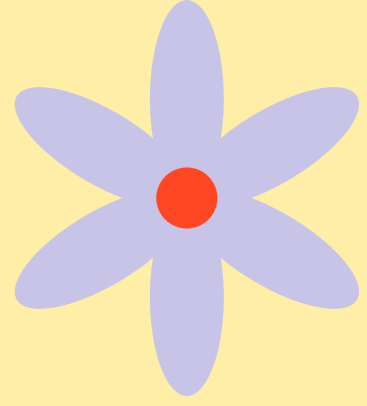
- Providing advice to the district or school regarding its English Learner Education programs.
- Meeting regularly with school officials to participate in the planning and development of programs designed to improve educational opportunities for ELs.
- Participating in the review of school improvement plans and district improvement plans as the plans relate to ELs.
- Review proposals by the school district to offer a new instructional program for ELs.
- Engage in fundraising activities and connect with local community partners.



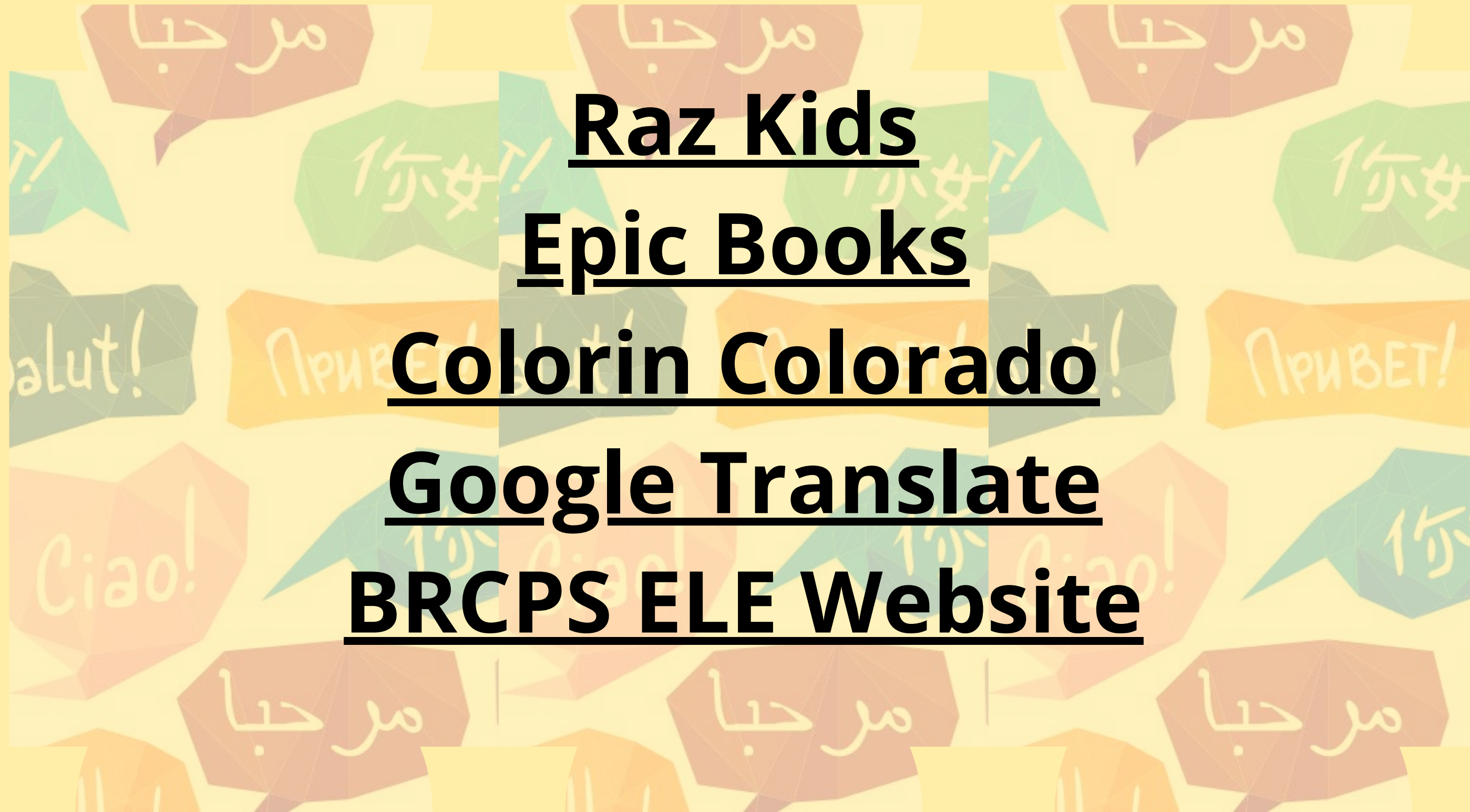
ELPAC

English Learner Parent Advisory Counsel

- We are looking for parents to volunteer to be a part of our ELPAC!
- We will plan to have another meeting in early Spring, where ELPAC leaders and families will choose what topics will be most beneficial to discuss at that time
 - It does not have to only be related to ELE - it can be anything! School questions, community resources etc.
- If you are interested in being a part of the ELPAC, or being a leader on the ELPAC, please email or call Ms. Galvin!



Resources



Raz Kids

Epic Books

Colorin Colorado

Google Translate

BRCPS ELE Website



DO YOU HAVE ANY QUESTIONS?

Answer questions from the survey and from the chat!

*Thank
you!*